

增強螢光染色的法寶

提高訊噪比和降低光致漂白效應(photobleaching)

Image-iT® FX Signal Enhancer

- 有效提高免疫染色之細胞和組織的訊噪比(signal-to-noise ratio)
- 降低背景螢光染色，讓您能清楚地看見目標染色結果

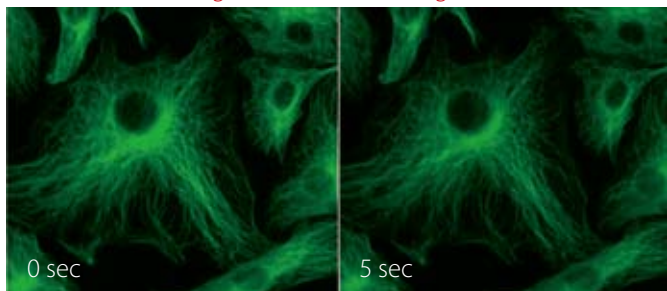


Image-iT® FX Signal Enhancer可以降低背景螢光染色。
左圖：Hippocampal brain切片只用螢光二抗和標準 blocking步驟染色，結果背景螢光很高。右圖：在染二抗之前用Image-iT® FX Signal Enhancer處理可明顯減少背景螢光。

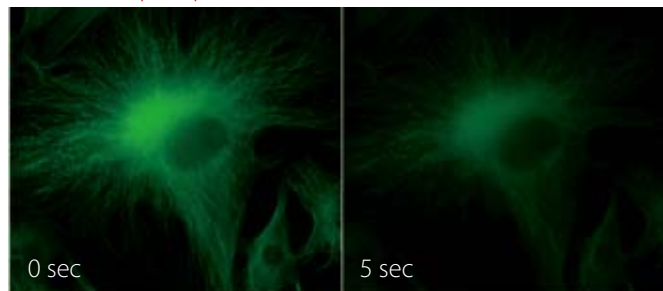
ProLong® Gold Antifade Reagent

- 有效降低光致漂白效應導致的螢光訊號淬熄(quenching)
- 為水溶性試劑，染色時不會產生斑點
- 與其他螢光染劑相容性高，可應用於多螢光染色

Mounted in ProLong® Gold Antifade Reagent



Mounted in phosphate-buffered saline



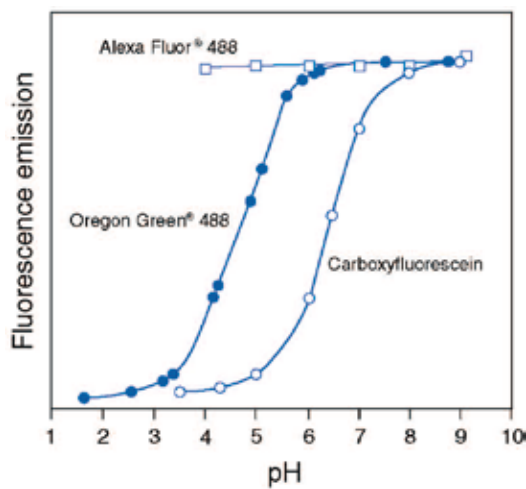
Images were acquired at 0 and 5 sec using a 40x/1.3 NA oil immersion objective with continuous illumination from a standard 100 W Hg-arc lamp.

Alexa Fluor® Dye Conjugates

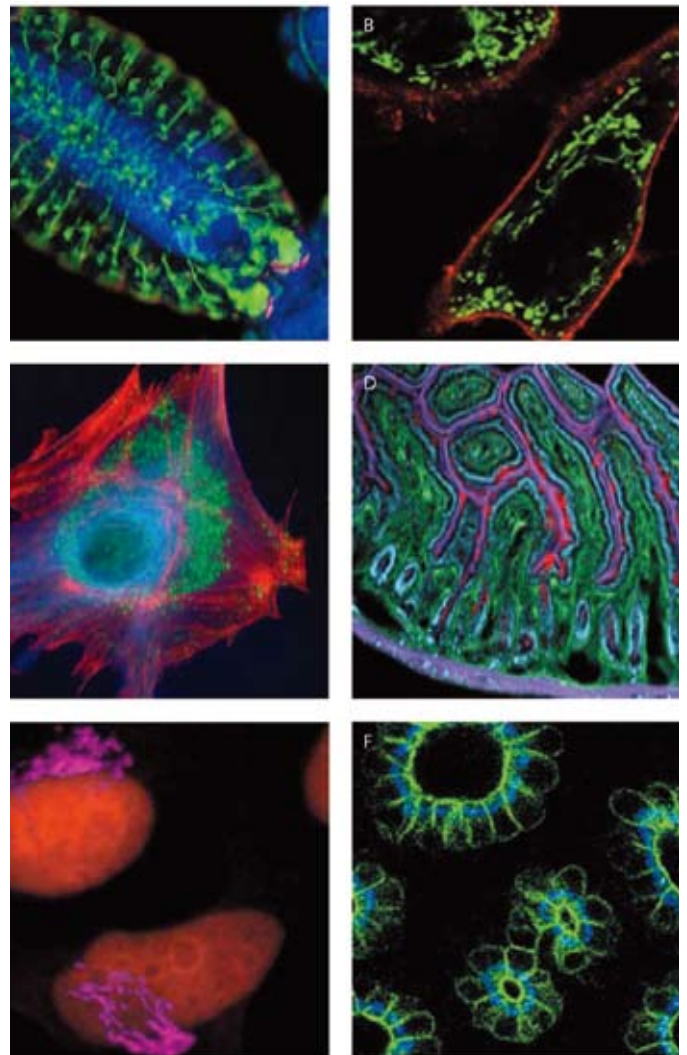
- 多顏色選擇—Alexa Fluor®染劑顏色選擇廣(從藍色到紅色)，為多色螢光檢測提供更多的選擇。
- 亮度更高—Alexa Fluor®的螢光強度明顯高於其他近似波長的染劑。
- 光穩定性高—Alexa Fluor®的光穩定性比絕大多數螢光染劑好，讓您可以從樣品中獲得更多的訊號。
- 對pH值變化極不敏感—Alexa Fluor®的螢光強度可以在極廣的pH值變化環境中，仍保持極高水準。
- 儀器適用性廣—Alexa Fluor®的吸收光譜與常用激發光源的激發波長相匹配，可以取代傳統的螢光染劑。

Alexa Fluor®染劑可取代傳統常用的螢光染劑

您目前使用的螢光染劑	代替的 Alexa Fluor®
AMCA, coumarin	Alexa Fluor® 350
Cy® 2 dye, FITC (fluorescein)	Alexa Fluor® 488
Cy® 3 dye, TRITC (tetramethylrhodamine)	Alexa Fluor® 555
Rhodamine Red™ dye	Alexa Fluor® 568
Texas Red® dye	Alexa Fluor® 594
Cy® 5 dye	Alexa Fluor® 647
Cy® 5.5 dye	Alexa Fluor® 680

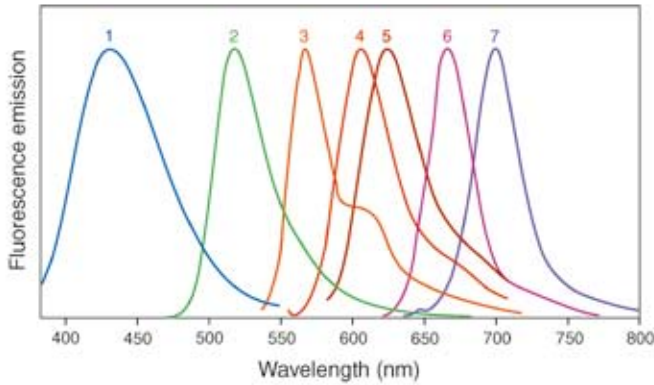


與其他螢光染劑相比，Alexa Fluor®（最上方曲線）對pH值變化較不敏感度。



Alexa Fluor®染劑：更亮，光穩定性更好，讓您的染色結果更亮眼。

Alexa Fluor® 系列螢光



Color	Alexa Fluor® dye	Abs *	Em *	Extinction coefficient
1	Alexa Fluor® 350	346	442	19,000
2	Alexa Fluor® 488	495	519	71,000
3	Alexa Fluor® 555	555	565	150,000
4	Alexa Fluor® 568	578	603	91,300
5	Alexa Fluor® 594	590	617	73,000
6	Alexa Fluor® 647	650	665	239,000
7	Alexa Fluor® 680	679	702	184,000

*Absorption and fluorescence emission maxima, in nm. † Extinction coefficient at λ_{max} in $cm^2 M^{-1}$. ‡ Human vision is insensitive to light beyond ~650 nm, and therefore it is not possible to view the far-red-fluorescent dyes looking through the eyepiece of a conventional fluorescence microscope. Colors in this table correspond to the spectra at left.

Spectral characteristics of the key dyes in the Alexa Fluor® series.

螢光染色好幫手

CultureWell™ Cell Culture Systems

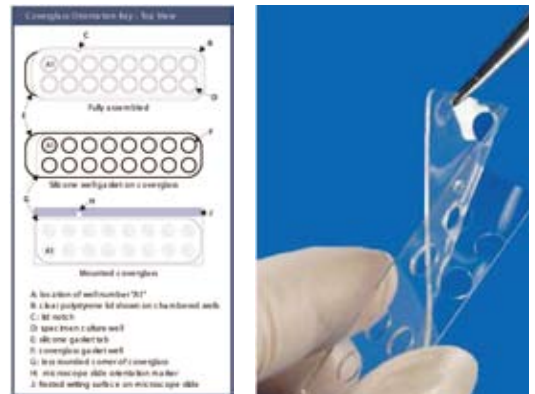
- 使用醫療級之矽膠襯墊與標準光學等級之蓋玻片組合成的細胞培養盤
- 整個細胞培養系統為無菌且隨開即用



CultureWell™ multislip cell culture systems

CultureWell™ Chambered Coverglasses

- 無菌且隨開即用
- 每片coverglass上有16 wells，方便在一片玻片上同時進行不同染色條件
- 可輕鬆的將coverglass移除以進行影像分析



CultureWell™ chambered coverglass

優惠活動快訊

凡於活動期間購買

任一種Alexa Fluor® 二抗 + Image-iT® FX Signal Enhancer或 ProLong® Gold Antifade Reagent，即贈送CultureWell™ Chambered coverglass (產品編號：C37005)

活動時間至2009/12/15止

CultureWell™ 產品明細

Product	Type	Well Depth	Volume per Well	Quantity per Package
CultureWell™ MultiWell cell culture system (1 plate with 4 coverslips)				
C24762	2-wells per coverslip	1.0 mm	250–400 μ L	10
C24763	2-wells per coverslip	2.0 mm	300–500 μ L	10
C24764	3-wells per coverslip	1.0 mm	300–500 μ L	10
C24765	4-wells per coverslip	1.0 mm	50–100 μ L	10
C24766	8-wells per coverslip	1.0 mm	15–30 μ L	10
C24767	8-wells per coverslip	1.0 mm	15–30 μ L	2
C24768	50-wells per coverslip	1.0 mm	3–10 μ L	10
CultureWell™ MultiWell Chambered Coverslips (24 mm × 50 mm)				
C24775	2-wells per coverslip	1.0 mm	250–400 μ L	20
C24776	2-wells per coverslip	2.0 mm	300–500 μ L	20
C24777	3-wells per coverslip	1.0 mm	300–500 μ L	20
C24778	4-wells per coverslip	1.0 mm	50–100 μ L	20
C24779	8-wells per coverslip	1.0 mm	15–30 μ L	20
C24780	50-wells per coverslip	1.0 mm	3–10 μ L	20
CultureWell™ MultiSlip cell culture system (1 polystyrene plate and lid with 1 insert)				
C24760	15 coverslips (12 mm) per insert			10
C24761	8 coverslips (18 mm) per insert			10
CultureWell™ Chambered coverglass for cell culture				
C37000	16-wells per coverglass (0.4 cm ² area per well)		100–250 μ L	8
C37005	16-wells per coverglass (0.4 cm ² area per well)		100–250 μ L	2
CultureWell™ Accessories				
C24769	CultureWell™ cell culture plate			10
C24770	CultureWell™ coverslip divider			4



Easily find your favorite brands of reagents, kits, and benchtop devices at www.invitrogen.com/everyday.

Ambion®

RNA and RNA sample prep

Molecular Probes®

Fluorescent dyes and probes

Dynal®

Magnetic beads for separation

Novex®

Protein separation and blotting

Gateway®

Cloning and protein expression

SuperScript®

cDNA synthesis reagents

GIBCO®

Cell culture

TaqMan®

Real-time PCR

Lipofectamine™

Transfection reagents

TOPO®

PCR cloning